

████████

████████

███

10.1

████████ : 3, 2024

████████ : ██████████
██████████
██████████

████████
a ███

- ██████████
 - ██████████
 - ██████████
 - ██████████
 - ██████████
 - ██████████
 - ██████████
- ████████ A ███

████████ : ██████████

████████ : ██████████
██████████
██████████
b s a b ██████████
b s ███
████████

████████ 3446, ██████████
(██████████) ██████████ y ███ a
██████████

████████ : ██████████
██████████

& ██████████

௧

1. $\frac{1}{x^2}$
2. $\frac{1}{x^3}$

௧௧

: 5 ன

௧

௧/

௧

௧

௧

, ௧

A ௧

: ௧

, ௧

௧

௧

௧

௧

, ௧

Sacramento City Unified School District
Compliance with Education Code Article 15 [17556-17561] Dedication of Real Property

NOTICE OF PUBLIC HEARING

The Sacramento City Unified School District hereby gives notice that a
Public Hearing will be held as follows:

Topic of Hearing: **Resolution to Convey Utility Easement Entitlements to Sacramento Municipal Utility District for Edward Kemble and Cesar Chavez Elementary Schools**

Copies of this program may be inspected at:

Serna Educational Center
5735 47th Avenue

425 1st Avenue
Sacramento, CA 95818

Facilities Department Office
425 1st Ave
Sacramento, CA 95818

Edward Kemble Elementary School
7495 29th Street
Sacramento, CA 95822

Cesar Chavez Elementary School
7500 32nd Street
Sacramento, CA 95822

The Sacramento City Unified School District Governing Board will consider adoption of a Resolution to Convey Utility Easement Entitlements to Sacramento Municipal Utility District at Edward Kemble and Cesar Chavez Elementary Schools.

HEARING DATE: October 3, 2024

TIME: 6:00 p.m.

LOCATION: Serna Educational Center
5735 47th Avenue
Sacramento, CA 95824

FOR ADDITIONAL INFORMATION CONTACT: SCUSD Facilities Support Services Department
(916) 395-3970 x 450004

SMUD0069
RECORD AT REQUEST OF AND RETURN TO:
Sacramento Municipal Utility District
Attention: Real Estate Services – B 209
P. O. Box 15830
Sacramento, CA 95852-1830

No Fee Document – Per Govt. Code Sec. 6103 & 27383
No County Transfer Tax Per R & T Code 11922

SMUD BY

Kim

APN: 049-0176-002-0000 &
049-0183-002-0000

~~PLEASE ACQUIRE THIS LINE FOR RECORDING NOT SMUD~~

R/W: U-2023/168
SO # 30186335

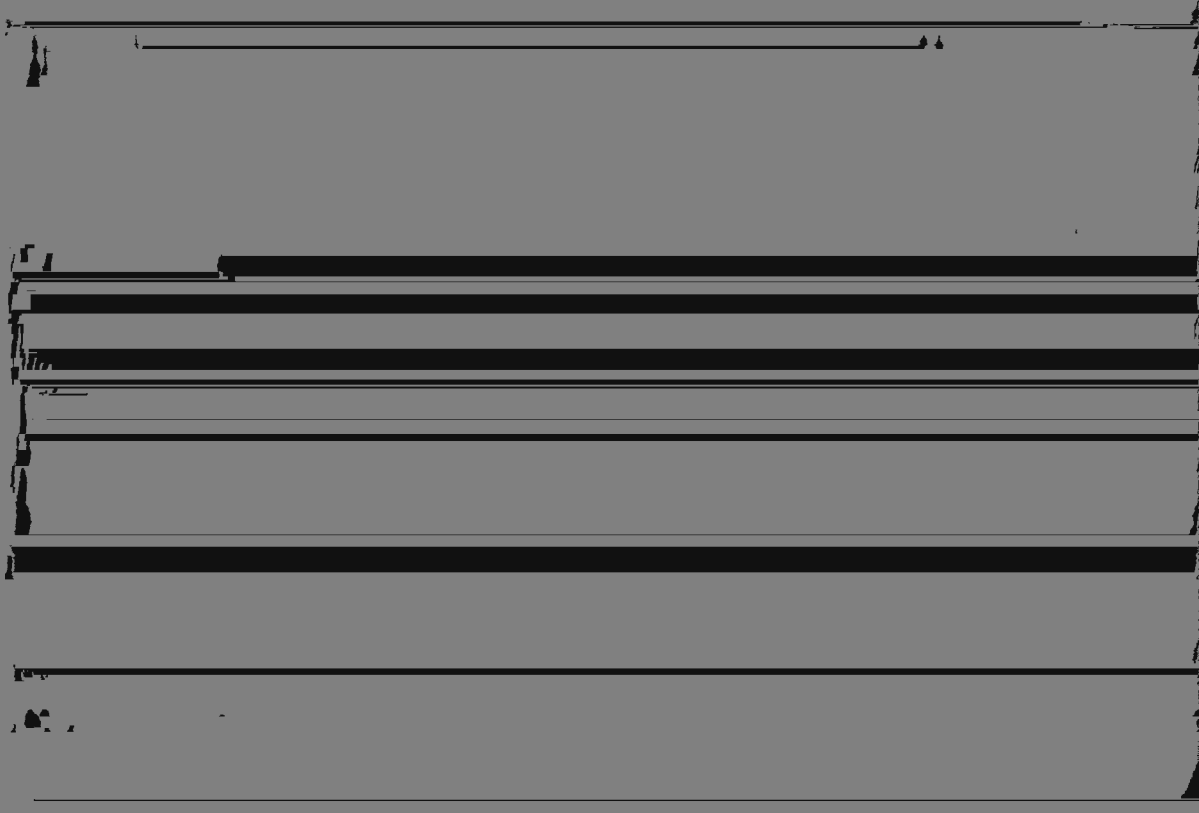
GRANT OF EASEMENT

SACRAMENTO CITY UNIFIED SCHOOL DISTRICT OF SACRAMENTO COUNTY, a political subdivision of the State of California, Grantor, hereby grants to **SACRAMENTO MUNICIPAL UTILITY DISTRICT, a municipal utility district**, Grantee, its successors and assigns, the right to use, occupy, and maintain the following described property:

[REDACTED]

**LEGAL DESCRIPTION
EXHIBIT A**

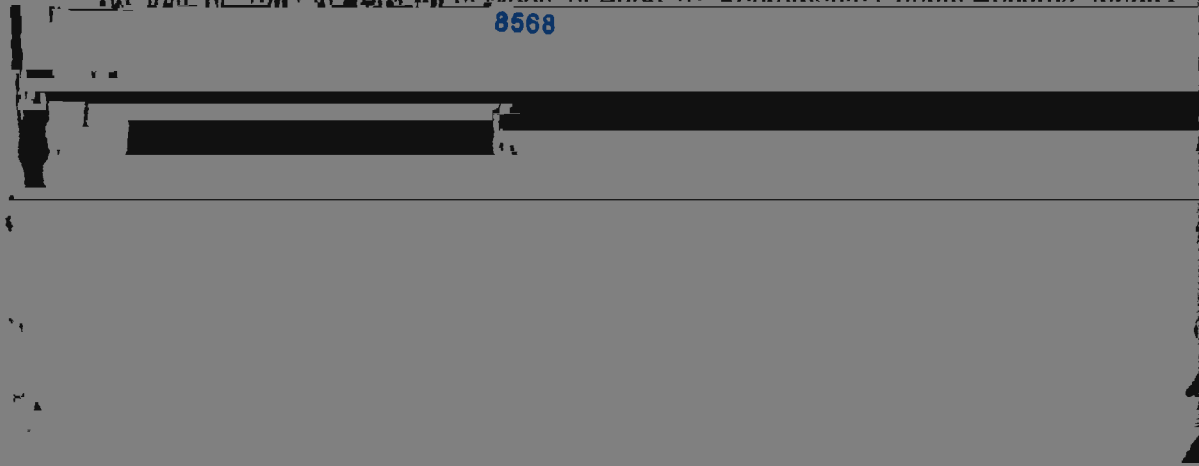
All that real property situated in the City of Sacramento, County of Sacramento, State of California, being a portion of Lot 4 as shown on that certain *Plat of Modification, Town of Hill*



No. 4 filed for record on May 13, 1960 in Book 60 of Maps, at Page 27, Sacramento County Records, being further described as a portion of the parcel of land described in that certain *Grant Deed* recorded on December 1, 1960 in Book 4157, at Page 812, Official Records of Sacramento County, and more particularly described in the following two(2) routes:

1. Within a strip of land 10 feet in width, the centerline of which is described as follows:
Commencing at a point in the ~~south~~ ^{south} line of said deeded parcel; said point being the northwest corner of Lot 10 as shown on that certain *Plat of Guild Estates* filed for record on July 31, 1961 in Book 66 of Maps, at Page 10, Sacramento County Records; thence

STATE W.
ANDERSON
8568

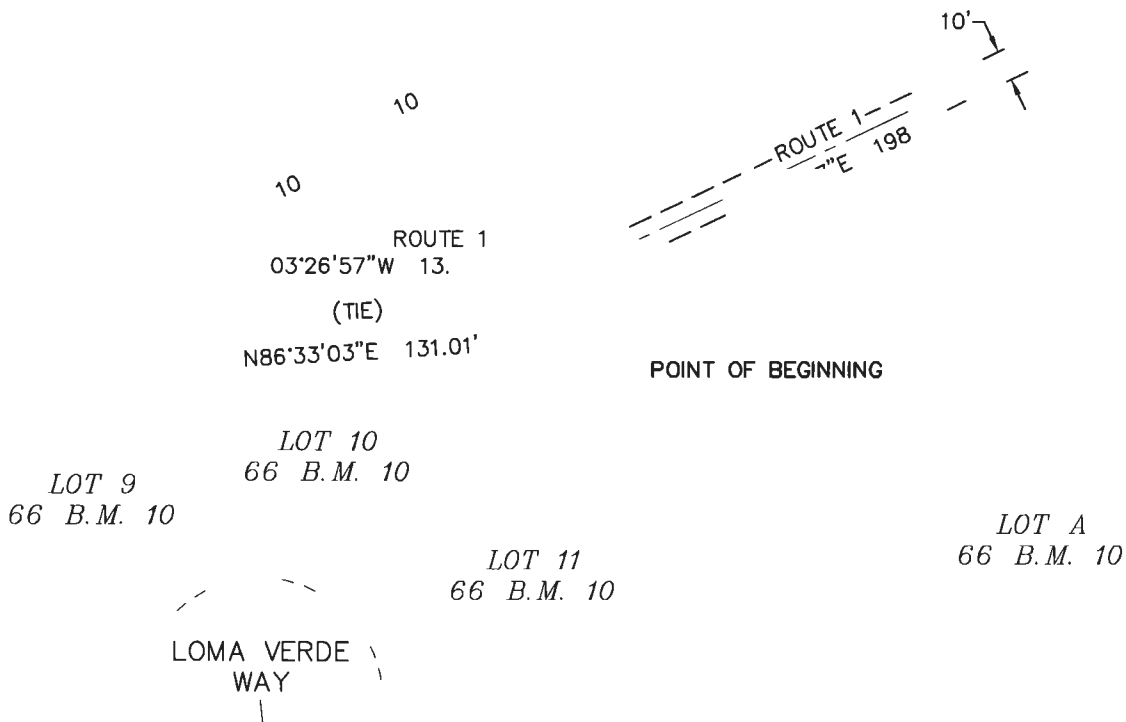


PORTION LOT A
60 B.M. 27

ROUTE 2

4157 O.R. 812

TE 1 --
110.8



O.R. = OFFICIAL RECORDS

SHANE M
ANDERSON

8568

o = DIMENSION POINT, NOTHING FOUND OR SET

30186335

DATE 7/26/23

TITLE

SCALE 1"=60'

DR SMA

CHKD CK

**CALIFORNIA ALL-PURPOSE
CERTIFICATE OF ACKNOWLEDGMENT**

A notary public or other officer completing this certificate verifies only the identity of the individual who signed the

[REDACTED]

COUNTY OF

}

TIA

June 7, 2023

SCUSD
CHRIS RALSTON

425 4th St

SACRAMENTO, CA 95818

Notification # 32229002

SMUD COMMITMENT LETTER

Thank you for submitting your plans for **KEMBLE CHAVEZ ELEMENTARY SCHOOL-R16** for an electric service. Your cooperation enables us to give you the best service possible, as well as provide for your future

We are returning your plans indicating the service location requirements checked below. Our commitment is subject to changing conditions and, as a result, may not be in effect after twelve months.

Please contact the Designer if additional information is desired.

Designer: Cristian Cervantes

Telephone (916) 732-7037

Service will be: Overhead Underground

Voltage: 277/480

Phase: Three

Wiring: 120/208V

(Street light service voltage will be the same as above.)

Transformer pad required:	Yes	<input checked="" type="checkbox"/>	No	<input type="checkbox"/>	SMUD Dwg. UVD 2.3A & 2.3A1
Conduit required:	Yes	<input checked="" type="checkbox"/>	No	<input type="checkbox"/>	(see sketch)
Right-of-way required:	Yes	<input checked="" type="checkbox"/>	No	<input type="checkbox"/>	
Transformer protection required:	Yes	<input type="checkbox"/>	No	<input checked="" type="checkbox"/>	SMUD Dwg. N/A
Primary pull box required:	Yes	<input type="checkbox"/>	No	<input type="checkbox"/>	

June 7, 2023

SCUSD

425 1ST ST.
SACRAMENTO, CA 95818

SUBJECT: ELECTRIC SERVICE REQUIREMENTS

Project Location: 7495 29TH ST.

Notification # 32229002

In order to schedule co
Sacramento Municipal

activity to p
rict (SMUD)

nt electric service to your development, the

Δ Property owner will start...
[REDACTED]



June 7, 2023

SCUSD
CHRIS RALSTON
425 1ST ST.
SACRAMENTO, CA 95818

Notification # 32229002

SUBJECT: CONVEYANCE OF ELECTRIC DISTRIBUTION FACILITIES

In response to your request for service at **KEMBLE CHAVEZ ELEMENTARY SCHOOL-R16**, the Sacramento

[REDACTED]

1. All structures shall comply with the
2. All grades shall be as shown. Should approved and
3. Elected Board of Requirements, Book 11
4. Elected Board,



5. All structures shall comply with the
6. All grades shall be as shown. Should approved and
7. Elected Board of Requirements, Book 11
8. Elected Board,

ST

LOMA VERDE WAY

Phase 1

EXHIBIT C
INSPECTON AND MAINTENANCE GUIDE

Isolater® Dow Plus

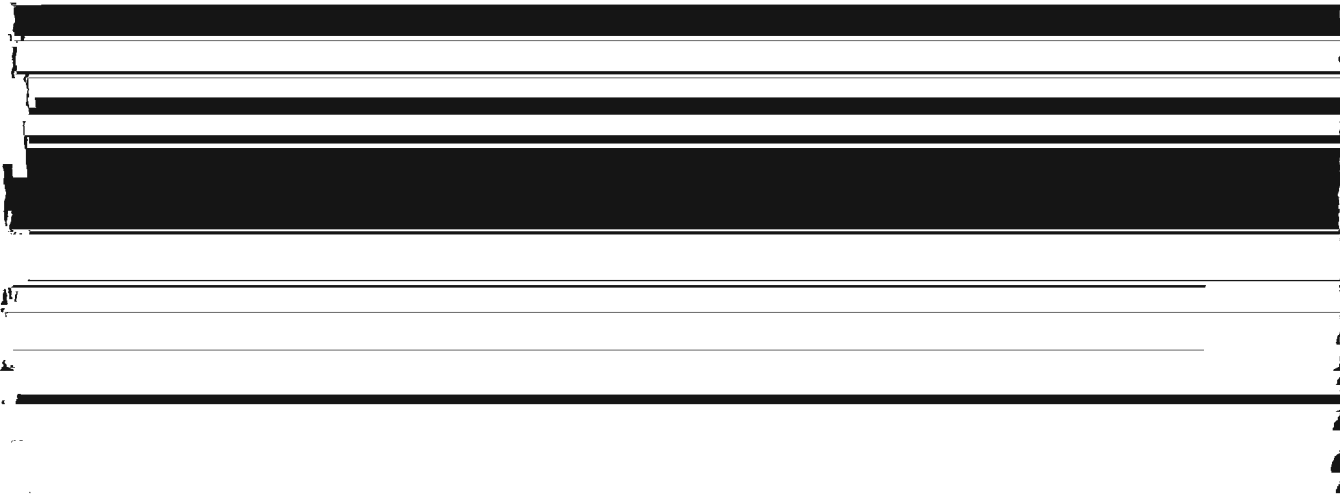
The Isolator[®] Row Plus

Introduction

An important component of any Stormwater Pollution Prevention Plan is inspection and maintenance. The StormTech Isolator Row Plus is a technique to inexpensively enhance Total Suspended Solids (TSS) and Total Phosphorus (TP) removal with easy access for inspection and maintenance.

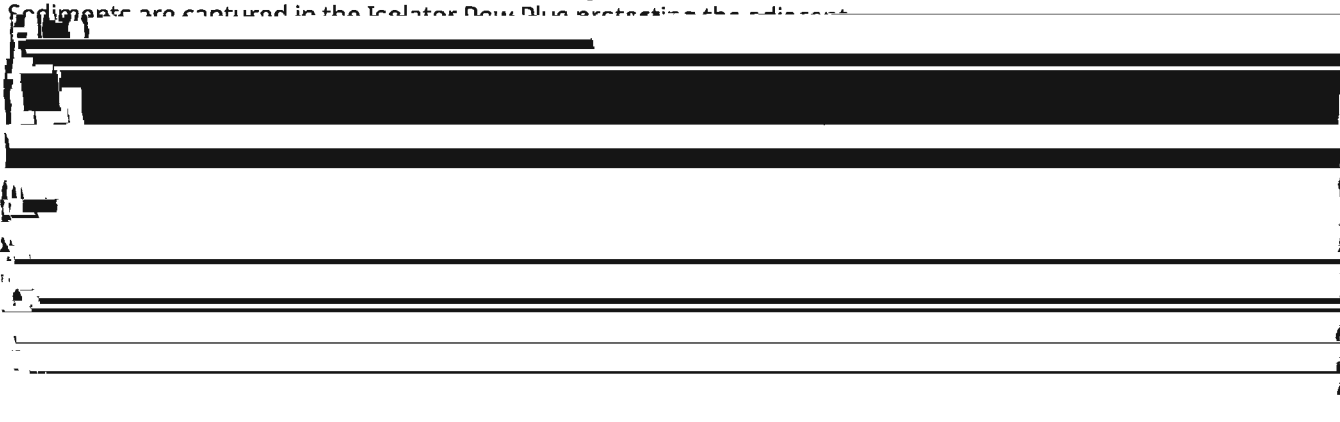
The Isolator Row Plus

The Isolator Row Plus is a row of StormTech chambers, either SC-160, SC-310, SC-310-3, SC-740, DC-780, MC-2500 or MC-7200 models that



is surrounded with filter fabric and connected to a closely located manhole for easy access. The fabric-wrapped chambers provide for sediment settling and filtration as stormwater rises in the Isolator Row Plus and passes through the filter fabric. The open bottom chambers and perforated sidewalls (SC-310, SC-310-3 and SC-740 models) allow stormwater to flow both vertically and horizontally out of the chambers.

Looking down the Isolator Row PLUS from the manhole opening, ADS PLUS Fabric is shown between the chamber and stone base.



stone and chambers storage areas from sediment accumulation.

ADS geotextile fabric is placed between the stone and the Isolator Row Plus chambers. The ADS geotextile provides a barrier for stormwater



Isolator Row Plus Inspection/Maintenance

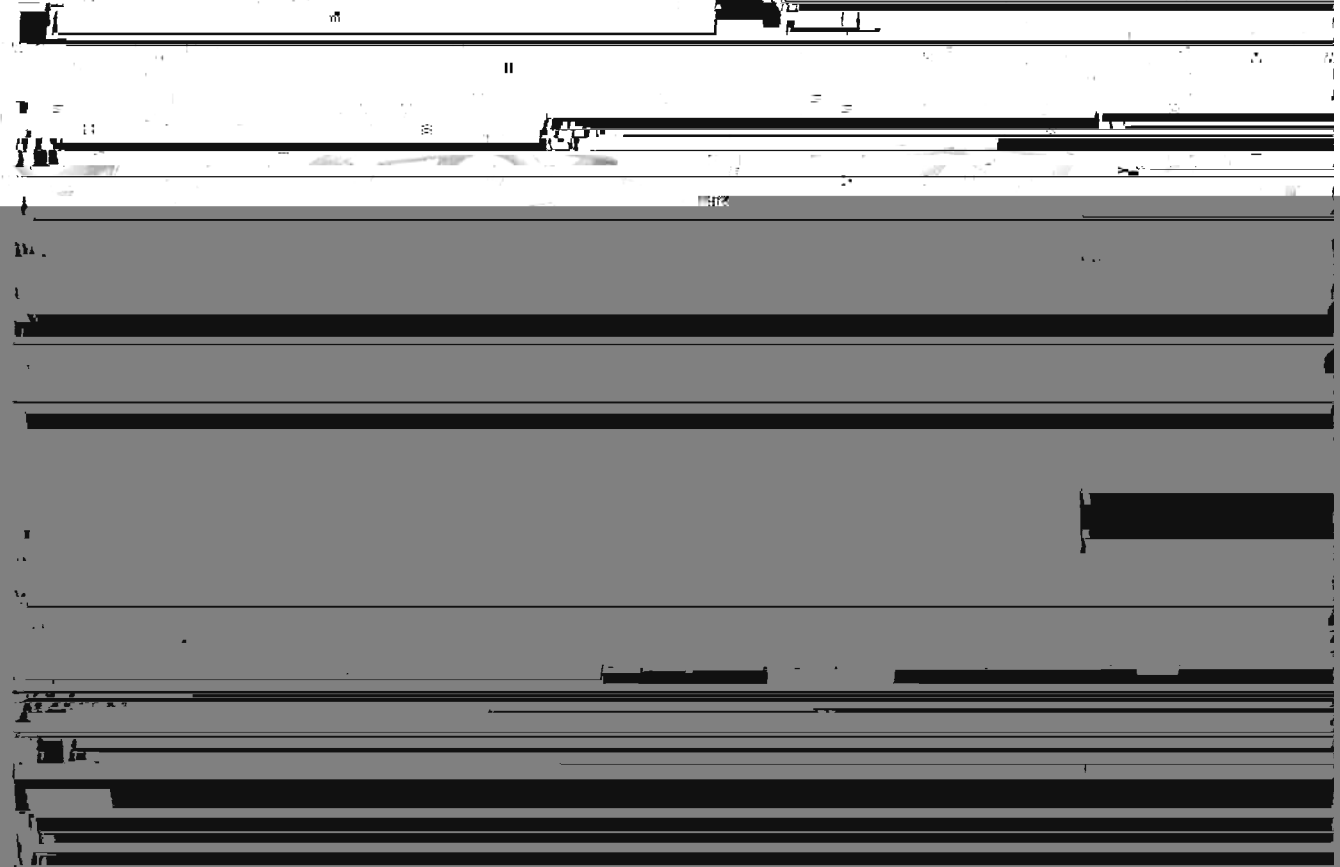
Inspection

The frequency of inspection and maintenance varies by location. A routine inspection schedule needs to be established for each individual location based upon site specific variables. The type of land use (i.e. industrial, commercial, residential), anticipated pollutant load, percent imperviousness, climate, etc. all play a critical role in determining the actual frequency of inspection and maintenance practices.

At a minimum, StormTech recommends annual inspections. Initially, the Isolator Row Plus should be inspected every 6 months for the first year of operation. For subsequent years, the inspection should be adjusted based upon previous observation

via a manhole(s) located on the end(s) of the row for cleanout. If entry into the manhole is required, please follow local and OSHA rules for a confined space entries.

Maintenance is accomplished with the JetVac process. The JetVac process utilizes a high pressure water nozzle to propel itself down the Isolator Row Plus while scouring and suspending sediments. As the nozzle is retrieved, the captured pollutants are flushed back into the manhole for vacuuming. Most sewer and pipe maintenance companies have vacuum/JetVac combination vehicles. Selection of an appropriate JetVac nozzle will improve maintenance efficiency. Fixed nozzles designed for culverts or large diameter pipe cleaning are preferable. ~~Dear customer,~~



BACKFILL MATERIAL

COVER ENTIRE ISOLATOR ROW WITH ADS
GEOSYNTHETICS 6011 NON-WOVEN GEOTEXTILE
8' (2.4 m) MIN WIDE

SC-740 CHAMBER

OPTIONAL INSPECTION PORT

ELEVATED BYPASS MANIFOLD

SC-740 END CAP

RUMBLE DEPTH: 0.75' BY

